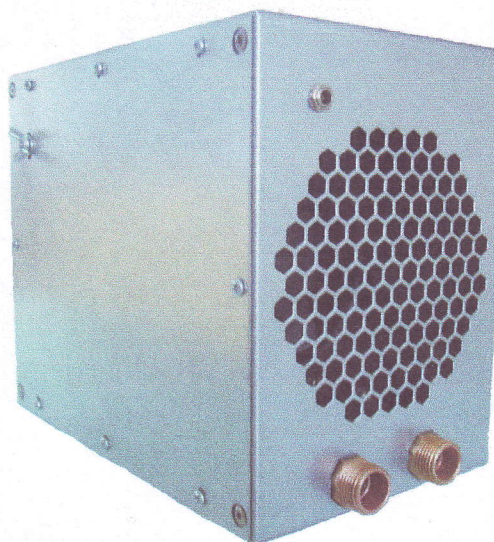
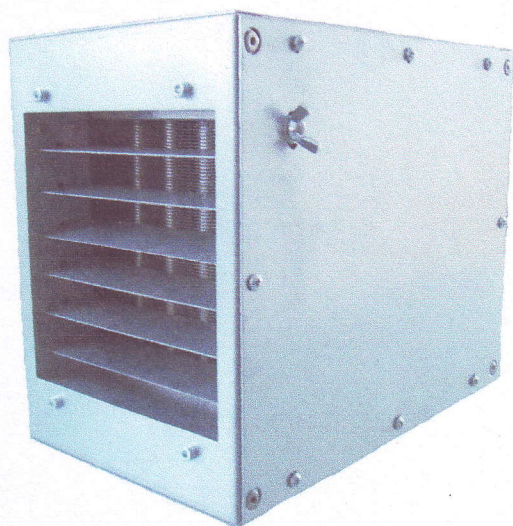


*Datasheet*

## **REFAX HWU – 17**

**Small Hot Water Air Heater Unit for Heating and Cooling**





Compact air / water unit with fan for heating or air cooling applications. Maximum heating performance – 1.7kW (US 5800BTU/h). It is equipped with an air condensate drain for use in a geothermal - heat exchanger cooling system without the use of a heat pump.

The metal sheet unit is equipped with the top-of-the-range plate heat exchanger EBERSPACHER KALORI-Silencio with copper piping and aluminum plates. The 12V fan provides air flow rate up to 170m<sup>3</sup>/hour (US 6003 CFH). The unit is designed to transfer heat from the water circuit to the air or vice versa.

The unit is not intended for use in dusty environments and does not have water protection. It must be installed indoors or protected against rain. Connection to the piping is solved by G1/2" fitting adapters. The unit includes a PWM controller enabling continuous power control of the unit in the range of 0-100%.

### **Use:**

Cottage heating – As a local heating unit with a fan for connection to a heating system. Ideal for use in wood burning stove circuits. The heating unit is able to heat the interior very quickly and, thanks to the air flow, it dehumidifies the air.

Garage heating – Ensures a rapid rise of temperature in an interior, which is normally heated to low temperature.

Cooling – Local unit for geothermal - heat exchanger cooling without the use of a heat pump.

PC, electric vehicle technology and solar system cooling – Powerful computer applications cooler using the heat for heating.

### **Specifications:**

Maximum heating performance – 1.7kW (US 5800BTU/h)

Air flow rate – to 170m<sup>3</sup>/h (US 6003 CFH)

Metal box – 250 x 200 x 150mm (US 9,84 x 7,87 x 5,9 in)

Fan – 12VDC - 7W

Noise level – 45db (MAX)

Heating system connection – G1/2"

Working pressure – MAX 3 BAR (US 43,5 PSI)